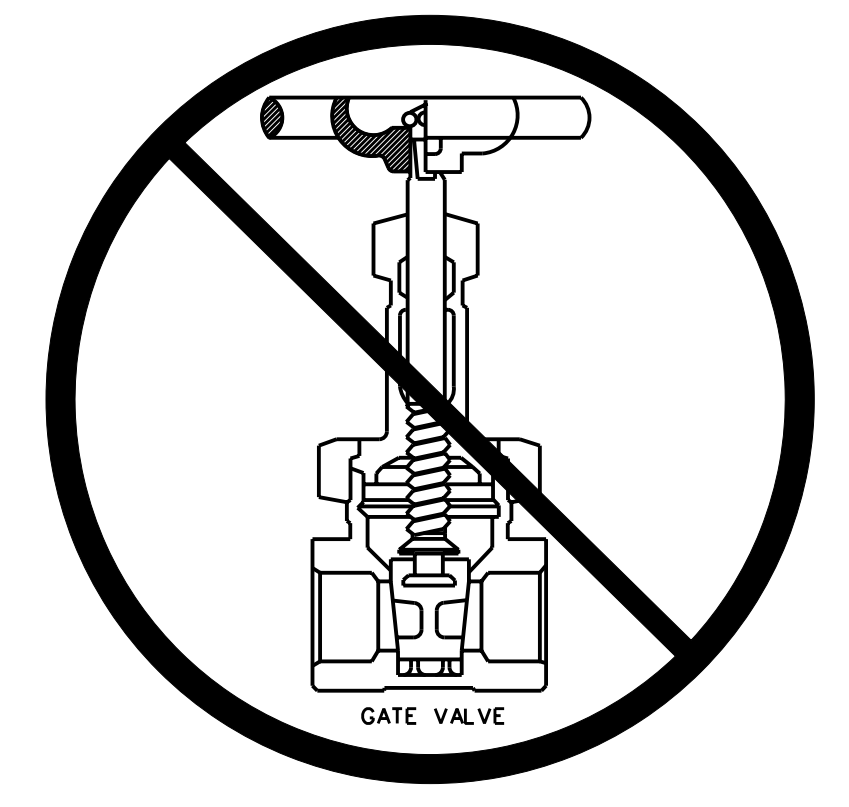
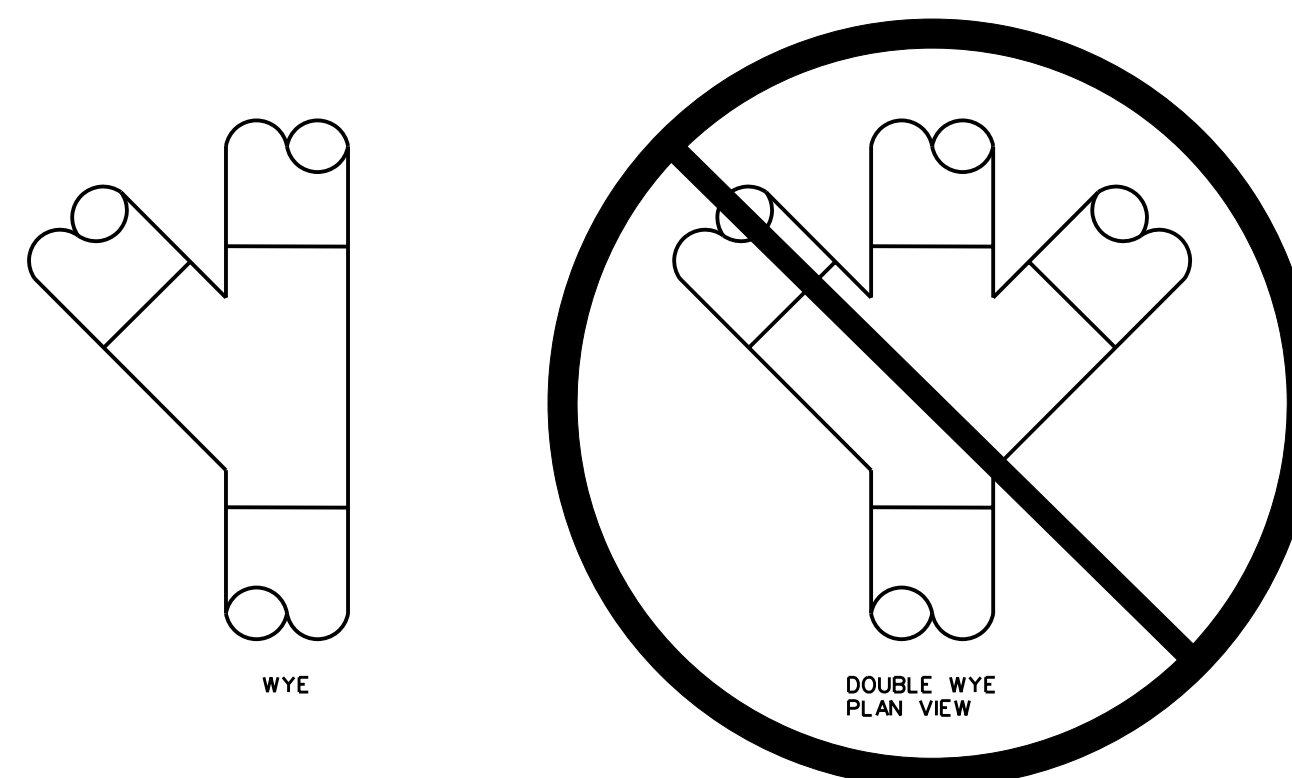


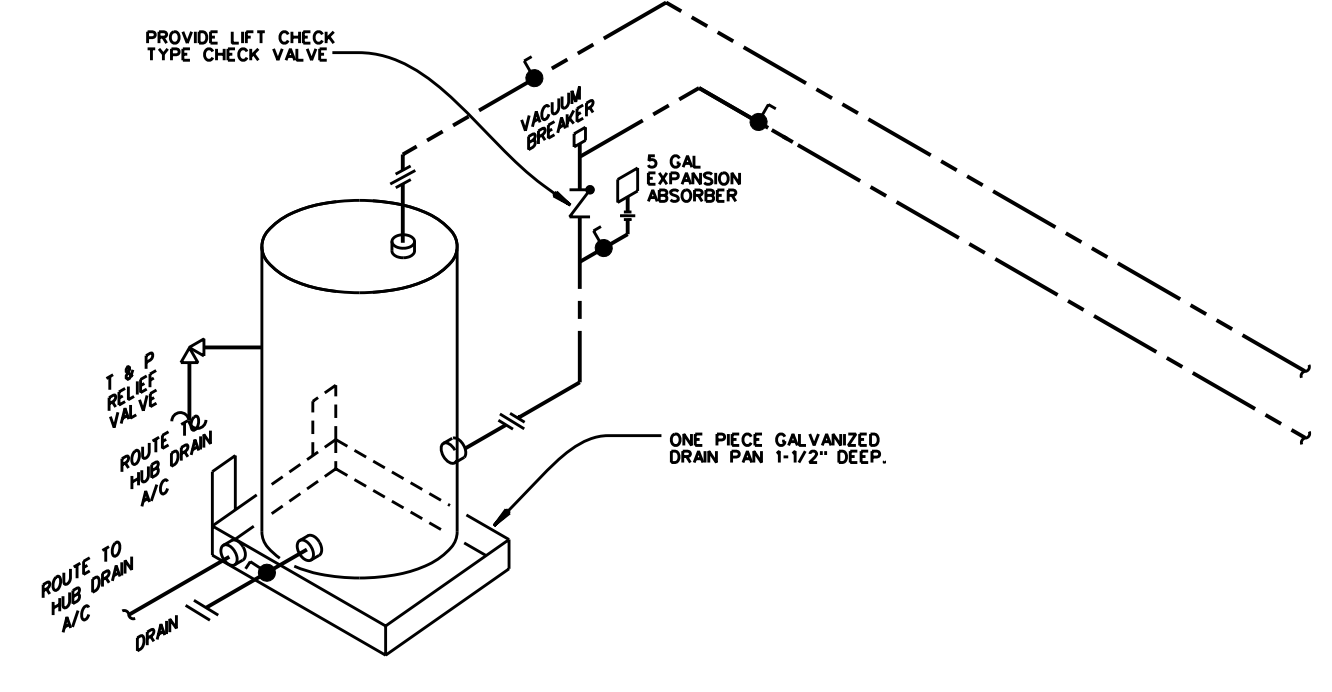
SEISMIC PIPING RESTRAINT DETAIL NOT TO SCALE



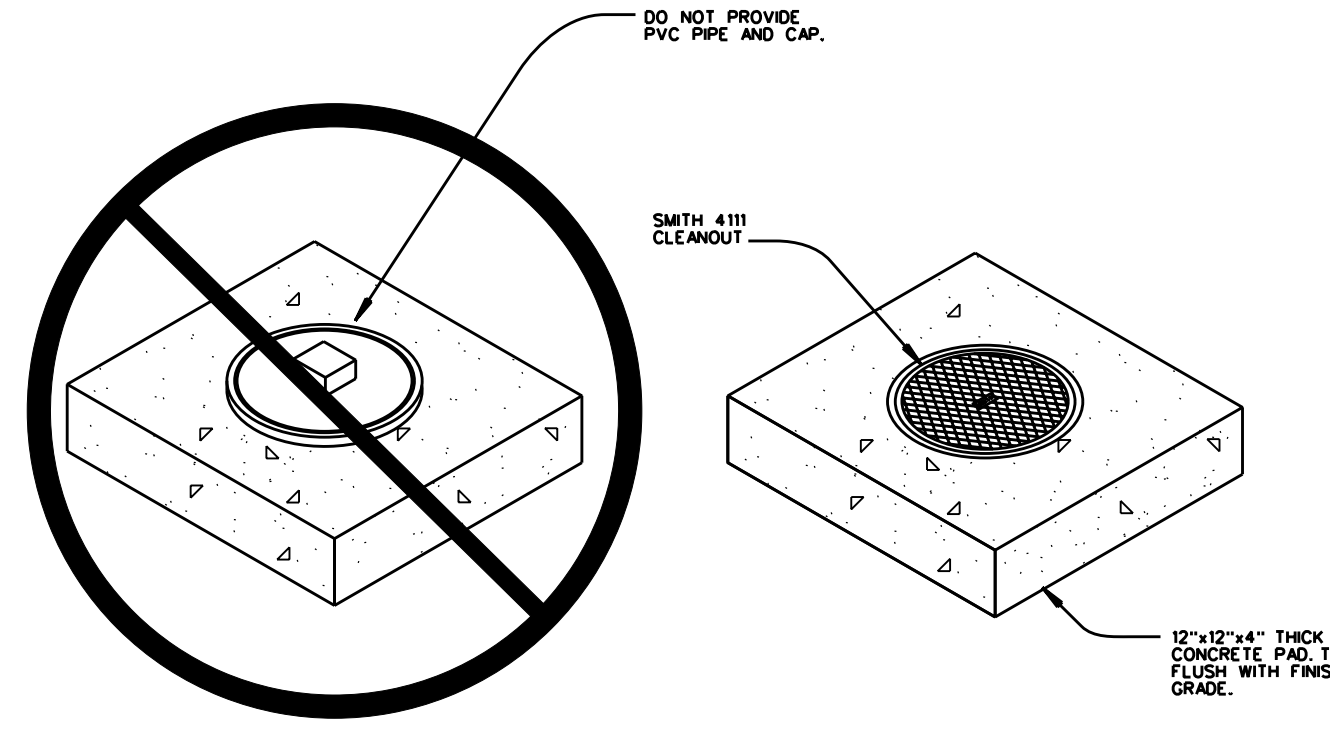
VALVE DETAIL NOT TO SCALE PROVIDE BALL VALVES DO NOT PROVIDE GATE VALVES



WYE DETAIL NOT TO SCALE PROVIDE EACH WYE, DO NOT PROVIDE EACH DOUBLE WYE



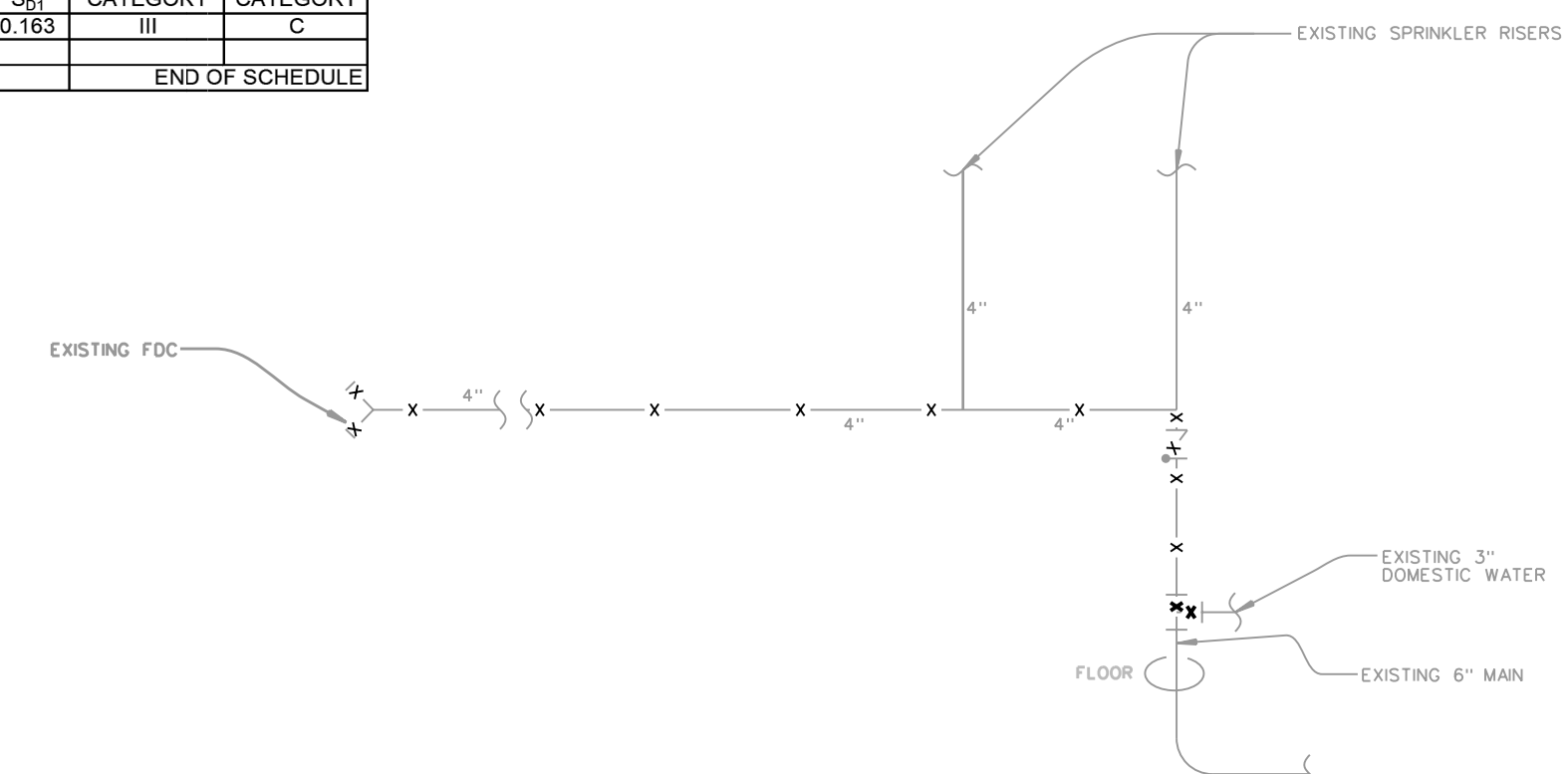
DOMESTIC WATER HEATER DETAIL NOT TO SCALE PROVIDE HEAVY GAUGE STEEL BRACKET TO SUPPORT WATER HEATER. SCHEDULE 40 IS THE LAYOUT BASIS



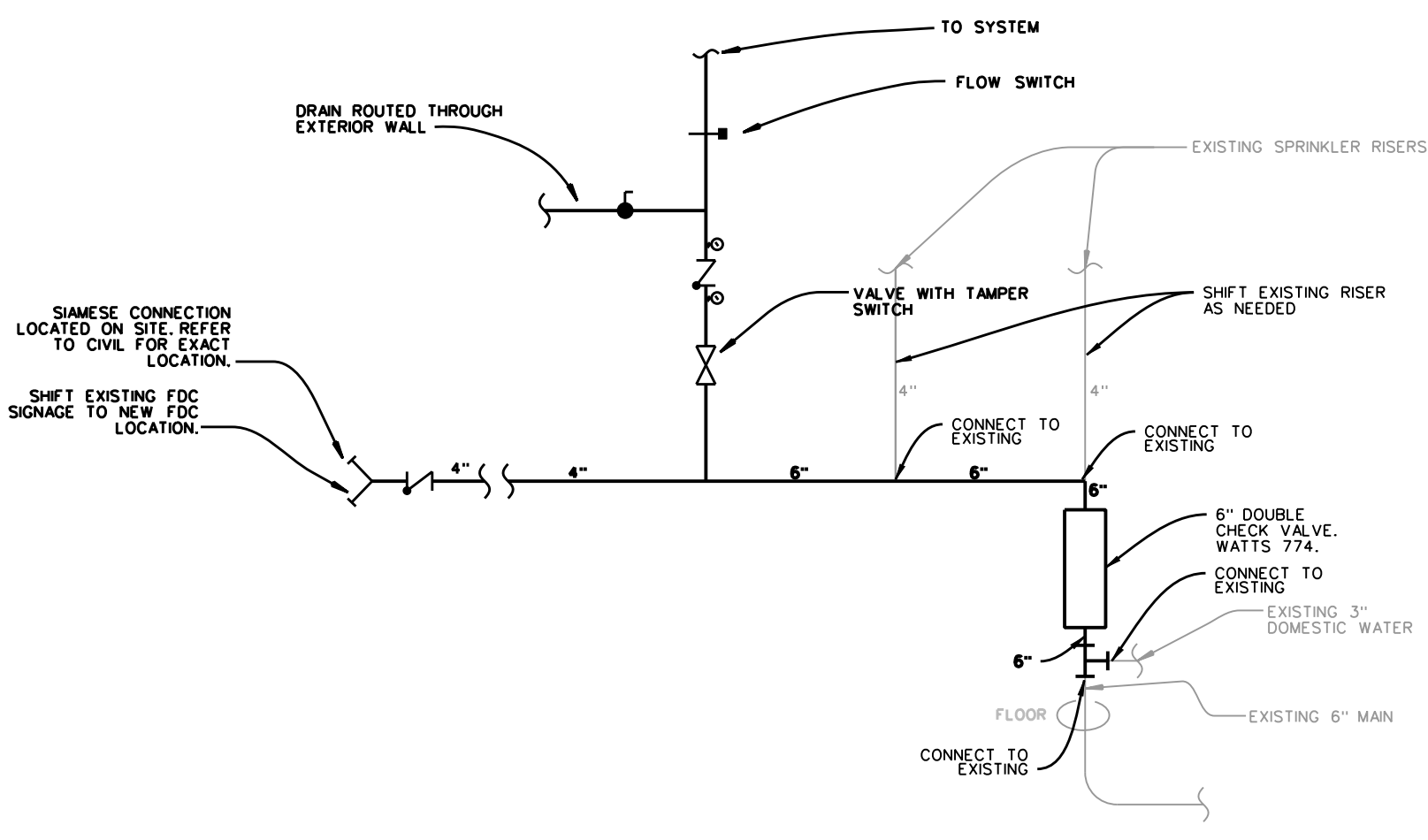
GRADE CLEANOUT DETAIL NOT TO SCALE

PLUMBING SEISMIC RESTRAINT NOTES
A. PROVIDE SEISMIC RESTRAINTS IN ACCORDANCE WITH THE 2006 STANDARD BUILDING CODE WITH GEORGIA 2007 REVISIONS, PARAGRAPH 1613. REFER TO SEISMIC SCHEDULE FOR SEISMIC DESIGN CATEGORY AND DESIGN COEFFICIENTS. SEISMIC RESTRAINTS SHALL BE PROVIDED IN ACCORDANCE WITH THE SMACNA SEISMIC RESTRAINT MANUAL, 2ND EDITION.
B. PROVIDE SEISMIC RESTRAINT FOR ALL NATURAL GAS PIPING.
C. SEISMIC RESTRAINTS SHALL NOT BE PROVIDED FOR THE FOLLOWING:
1. ALL HVAC AND PLUMBING PIPING OTHER THAN NATURAL GAS PIPING.
2. ALL DUCTWORK.
3. ALL HVAC AND PLUMBING EQUIPMENT.
4. SPRINKLER PIPING.
D. REFER TO THE SEISMIC RESTRAINT DETAILS ON THE DRAWINGS. OTHER RESTRAINT METHODS IN ACCORDANCE WITH THE SMACNA SEISMIC RESTRAINT MANUAL SHALL BE ACCEPTABLE.
E. THE LAYOUT BASIS FOR SEISMIC RESTRAINTS IS VIBRATION MOUNTINGS & CONTROLS, MASON, KINETICS, AND AMBER BOOTH SHALL ALSO BE ACCEPTABLE. PROVIDE SEISMIC RESTRAINT PRODUCT SUBMITTALS AND SHOP DRAWINGS PER SPECIFICATION SECTION 15010.

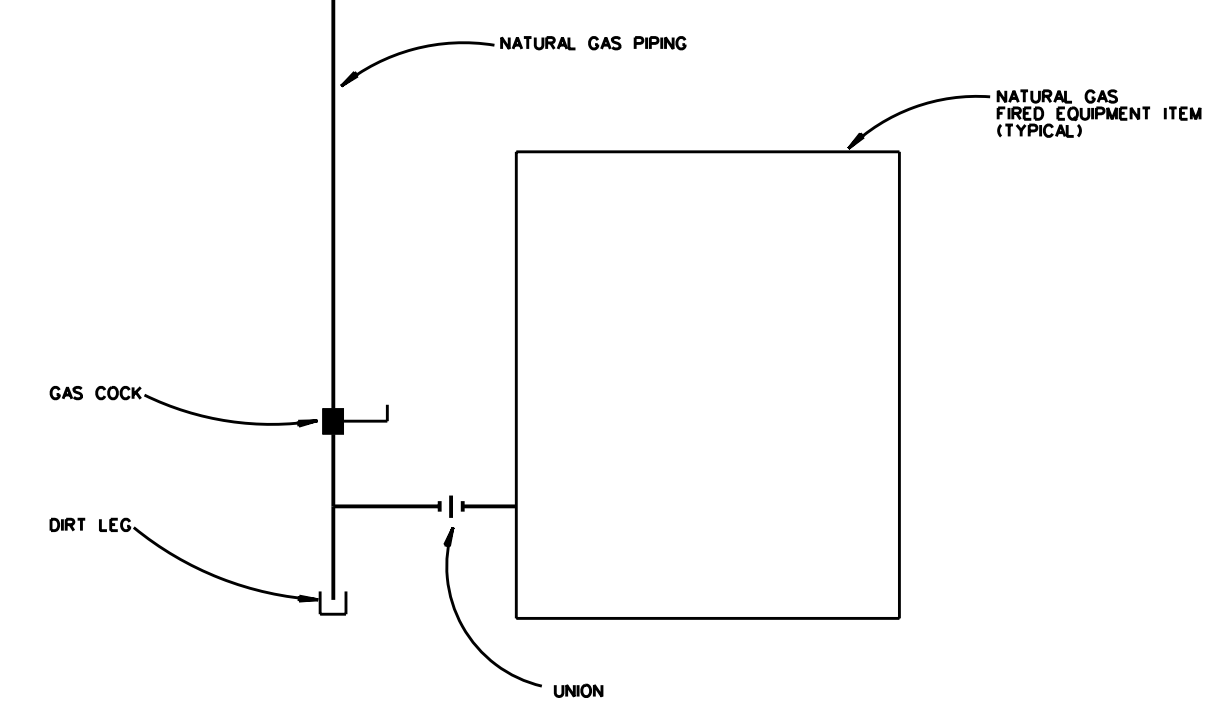
SEISMIC DESIGN COEFFICIENTS SCHEDULE table with columns for SITE, CLASS, and OCCUPANCY DESIGN CATEGORY.



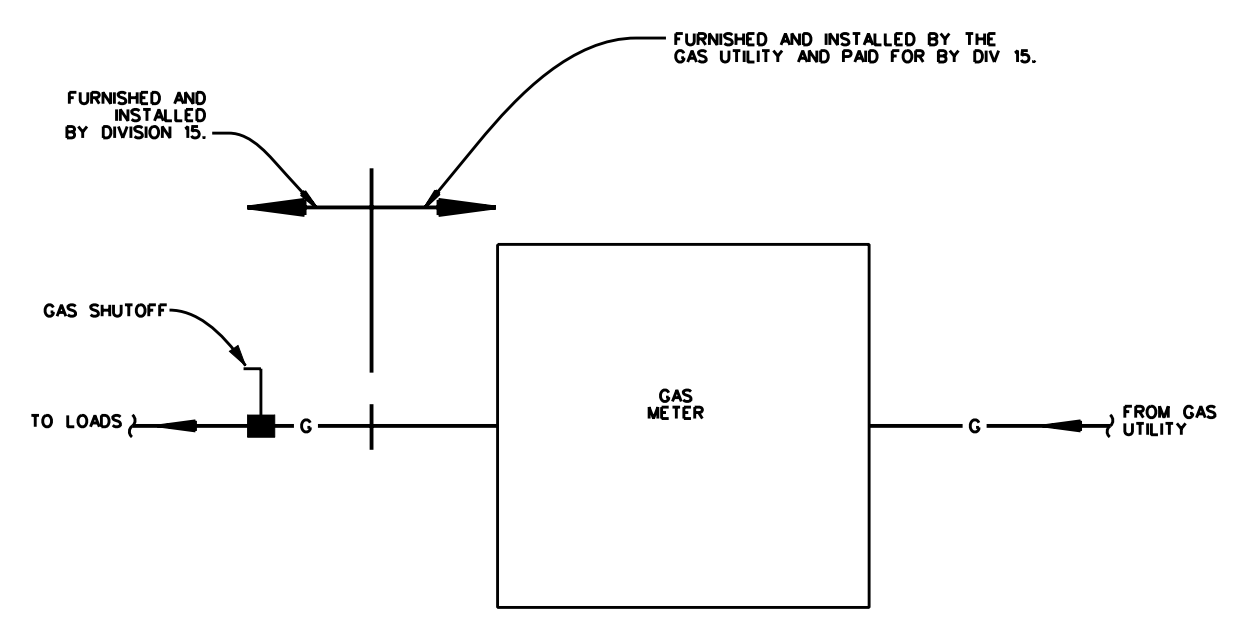
SHOTGUN RISER DEMO DETAIL NOT TO SCALE



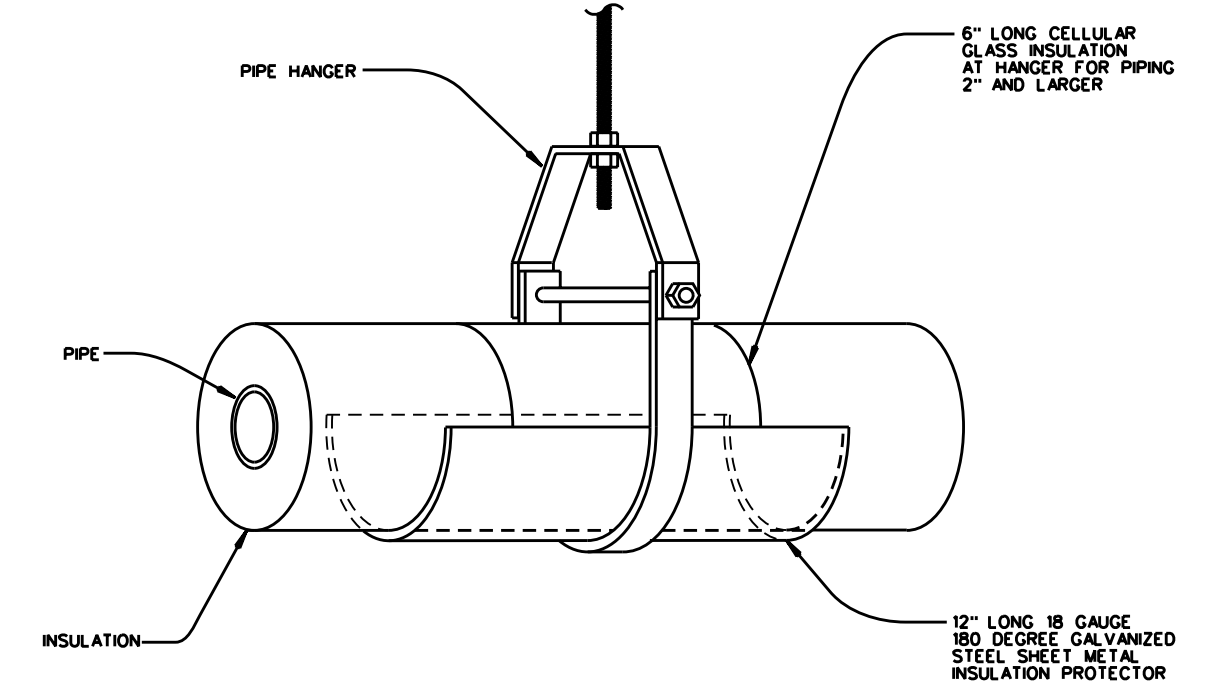
SHOTGUN RISER NEW WORK DETAIL NOT TO SCALE



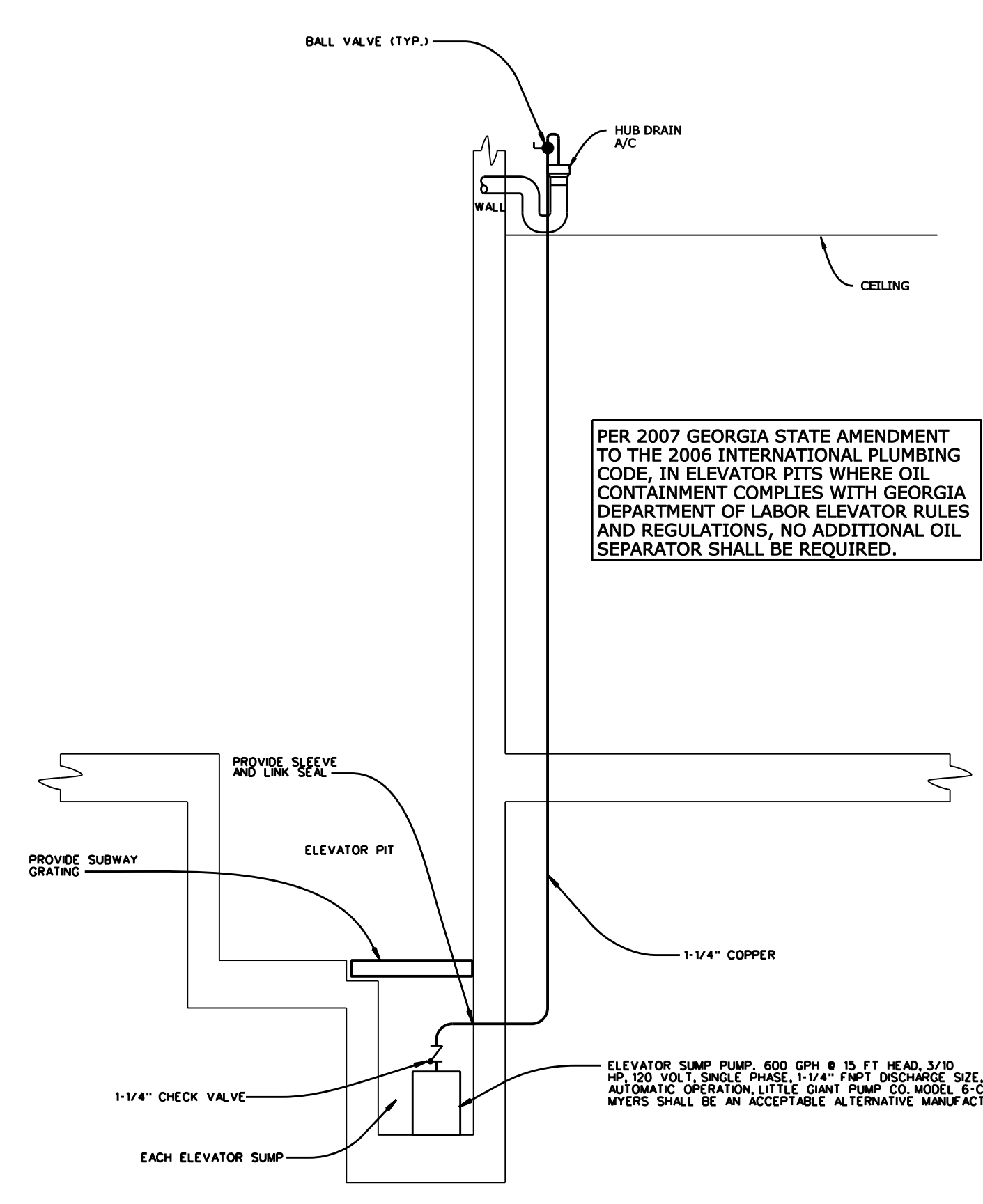
NATURAL GAS PIPING DETAIL NOT TO SCALE



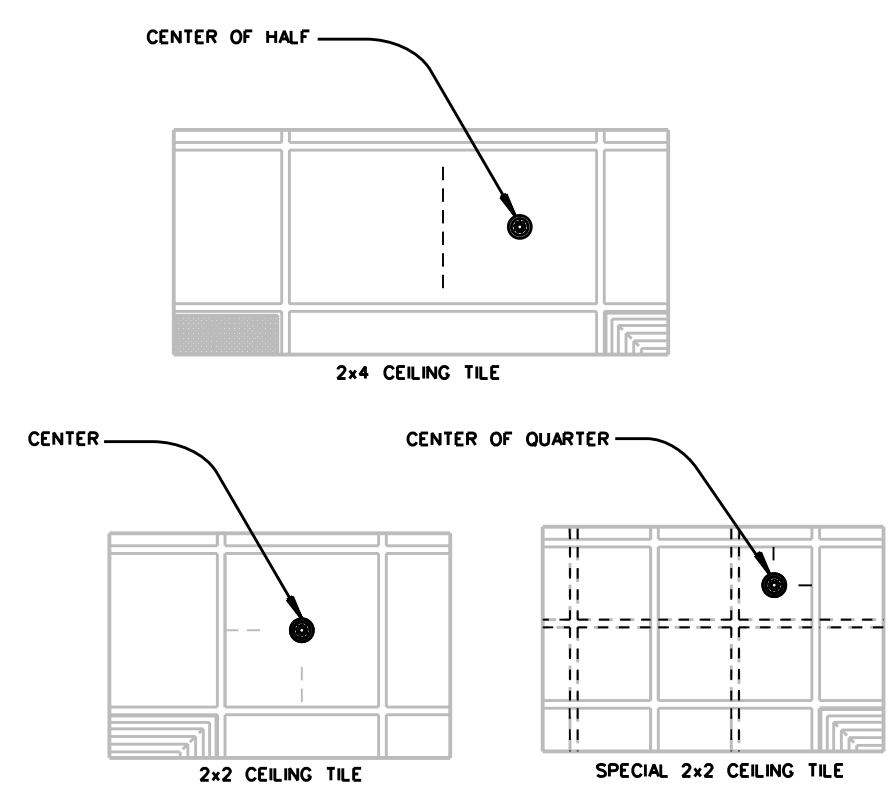
GAS METER DETAIL NOT TO SCALE



PIPING INSULATION DETAIL NOT TO SCALE



ELEVATOR SUMP DETAIL NOT TO SCALE



SPRINKLER HEAD LOCATION DETAIL NOT TO SCALE

- PLUMBING LEGEND
--- VENT PIPING
--- COLD WATER PIPING
--- HOT WATER PIPING
--- HOT WATER RECIRCULATION PIPING
--- BALL VALVE
--- WATER HAMMER ARRESTER
--- GAS COOK
--- SANITARY PIPING
--- GREASE WASTE PIPING
--- NATURAL GAS PIPING
--- AUTOMATIC SPRINKLER PIPING
--- EXISTING TO REMAIN
--- DEMOLISH
--- STRAINER
--- CHECK VALVE
--- TRAP PRIMER ABOVE CEILING REFER TO GENERAL NOTES
--- MIXING VALVE WITH UNIONS

- BARNWELL ELEMENTARY SCHOOL 2007-0178
PLUMBING ABBREVIATIONS
CW: COLD WATER
HW: HOT WATER
HWR: HOT WATER RECIRCULATION
VTR: VENT THROUGH ROOF
TP: TRAP PRIMER
WHA: WATER HAMMER ARRESTER
HD: HUB DRAIN
CO: CLEANOUT
FCO: FLOOR CLEANOUT
GCO: GRADE CLEANOUT
B/F: BELOW FLOOR
A/C: ABOVE CEILING
U/G: UNDER GROUND
AFG: ABOVE FINISHED GRADE
BFC: BELOW FINISHED CEILING
IE: INVERT ELEVATION

- PLUMBING AND FIRE PROTECTION GENERAL NOTES
A. REFER TO THE ARCHITECTURAL DRAWINGS FOR THE EXACT LOCATION OF EACH PLUMBING FIXTURE.
B. PROVIDE EACH BALL VALVE AS INDICATED OR SPECIFIED. GATE VALVES SHALL NOT BE ACCEPTABLE.
C. PROVIDE A FULL COVERAGE WET AUTOMATIC NFPA 13 SPRINKLER SYSTEM FOR EACH ROOM. PROVIDE A LIGHT HAZARD SYSTEM UNLESS OTHERWISE NOTED. PROVIDE A FULL COVERAGE ORDINARY HAZARD SYSTEM FOR EACH MECHANICAL ROOM, EACH STORAGE ROOM, EACH ELECTRICAL ROOM, AND EACH JANITOR CLOSET. PROVIDE A SPRINKLER HEAD AT THE TOP AND AT THE BOTTOM OF EACH ELEVATOR HOISTWAY.
D. EACH AUTOMATIC SPRINKLER HEAD SHALL BE CENTERED WITHIN EACH CEILING TILE.
E. WHERE SHEET ROCK CEILINGS ARE PRESENT, AUTOMATIC SPRINKLER HEADS SHALL BE ALIGNED WITH EACH OTHER AND SHALL BE PROVIDED SYMMETRIC WITH THE CEILING MOUNTED LIGHTS AND DIFFUSERS. THE LOCATION OF EACH AUTOMATIC SPRINKLER HEAD ON THE SHOP DRAWINGS SHALL BE REVIEWED BY THE ARCHITECT. SPRINKLER HEAD LOCATIONS SHALL BE ADJUSTED TO MEET THE ARCHITECT'S APPROVAL.
F. SIZE PIPING HANGERS TO BEAR ON THE OUTSIDE OF THE PIPING INSULATION.
G. ROUTE EACH DISCHARGE LINE FROM EACH ABOVE CEILING TRAP PRIMER DOWN THROUGH EACH WALL AND UNDERGROUND BELOW EACH FLOOR TO DISCHARGE TO EACH FLOOR DRAIN. REFER TO EACH FLOOR PLAN FOR THE NUMBER OF DISCHARGE LINES PER TRAP PRIMER.
H. ALL DOMESTIC WATER AND AUTOMATIC SPRINKLER PIPING SHALL BE ROUTED WITHIN THE CEILING CAVITY BELOW THE ELEVATION OF THE ROOF INSULATION TO INSURE FREEZE PROTECTION.
I. THE ROOF INSULATION IS LOCATED AT THE SLOPED ROOF.
J. EACH HOT AND COLD WATER HEADER WITHIN EACH CHASE SHALL BE FULL SIZE.
K. DO NOT ROUTE PIPING IN FRONT OF COMBUSTION AIR LOUVERS DUE TO THE RISK OF FREEZING.
L. PIPING SHALL NOT BE ROUTED BENEATH OR ADJACENT TO EACH HVAC AND PLUMBING EQUIPMENT ITEM TO ALLOW EQUIPMENT REMOVAL AND EQUIPMENT ACCESS.
M. ALL GREASE WASTE PIPING SHALL BE SLOPED AT 2 PERCENT.
N. TRAP PRIMERS SHALL NOT BE PROVIDED FOR FLOOR DRAINS AND HUB DRAINS SERVED BY THE FRESH AIR SYSTEM.
O. PROVIDE CONTINUOUS CARPET OVER EACH FLOOR CLEANOUT. DO NOT PROVIDE A CARPET MARKER. DO NOT CUT THE CARPET FOR ANY REASON AT EACH FLOOR CLEANOUT.
P. REFER TO THE SPECIFICATION BOOK INCLUDING DIVISION 15 SPECIFICATIONS.

Vertical text on the left margin: \\cdh-partners.com\projects\ES\2007-0178\Design\7178p001.dgn

Table with columns for grid lines (A1, 1-19) and row labels (NO SCALE, PF001).

SHEET TITLE
PLUMBING AND FIRE PROTECTION

CDH PARTNERS ARCHITECTURE ENGINEERING INTERIOR DESIGN CONSTRUCTION SERVICES
675 Tower Road Marietta, Ga 30060-6958
Off: 770.423.0016 Fax: 770.424.0260 www.cdhpartners.com

GEORGIA REGISTERED PROFESSIONAL ENGINEER No. 17073 R. GARRITY

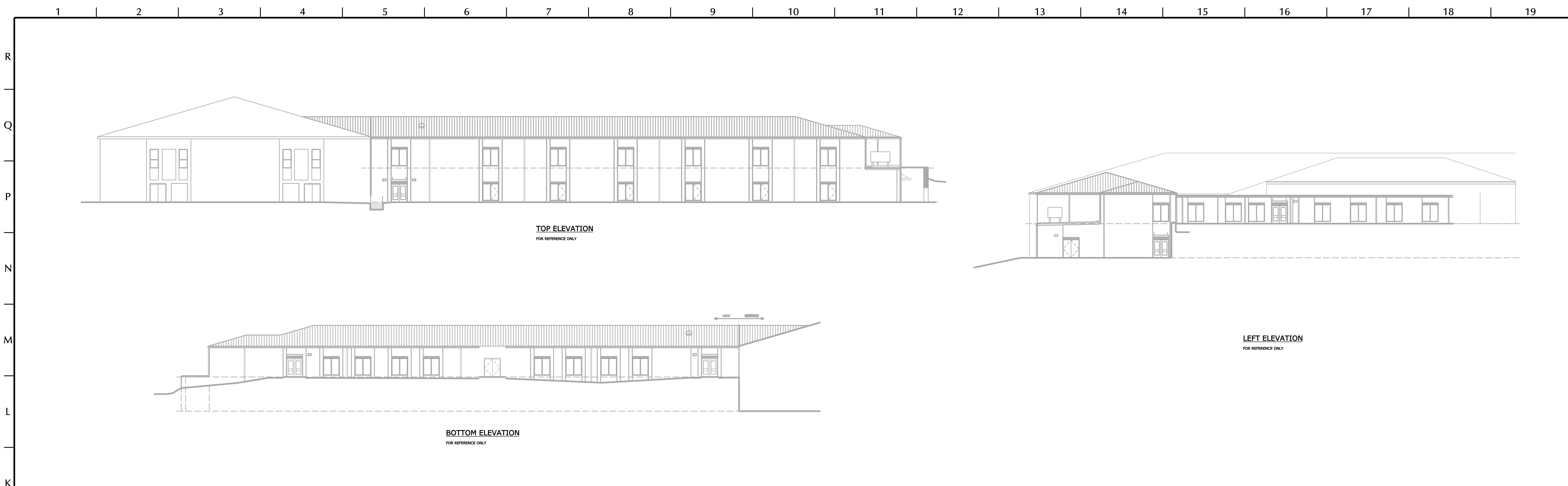
Fulton County Schools Where Students Come First

ADDITION AND RENOVATION FOR BARNWELL ELEMENTARY SCHOOL FULTON COUNTY SCHOOL DISTRICT JOHN'S CREEK, GEORGIA

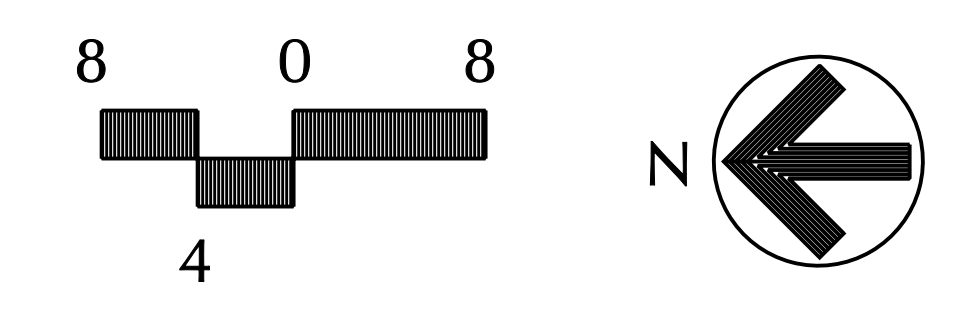
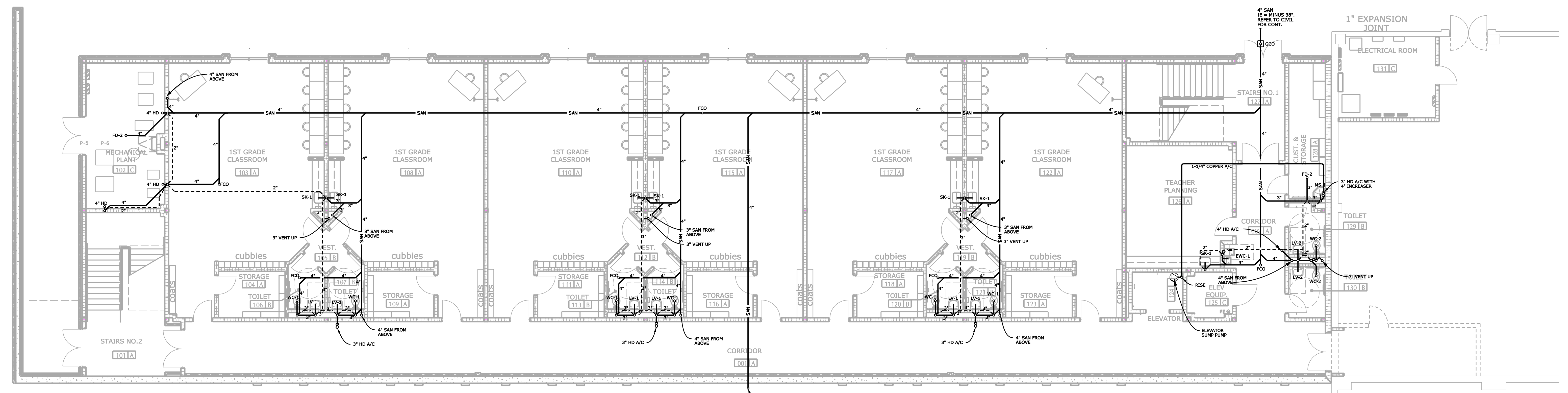
Table with columns for dates and drawing status: CD 03-06-09 PERMIT REVIEW, CD 06-24-09 PERMIT RE-SUBMITTAL, CD 07-20-09 BID SET, 10-05-09 ADDENDA A

PROJECT NO: 2007-0178
CAD FILE NAME: 7178p001.dgn

DRAWING NUMBER PF001 1 OF 9



K1 EXTERIOR ELEVATIONS
 1/16" = 1'-0" M101 ae001-7178.dgn; ae002-7178.dgn; ae003-7178.dgn



A1 LOWER LEVEL FLOOR PLAN
 1/8" = 1'-0" PF101 am001-7178.dgn

SANITARY WASTE AND VENT PIPING
 SHEET TITLE
 PLUMBING AND
 FIRE PROTECTION

CDH PARTNERS
 ARCHITECTURE
 INTERIOR DESIGN
 CONSTRUCTION SERVICES
 675 Tower Road
 Marietta, Ga 30060-6958
 Off: 770.423.0016
 Fax: 770.424.0260
 www.cdpartners.com

REGISTERED PROFESSIONAL ENGINEER
 No. 17073
 R. GARRI

Fulton County Schools
 Where Students Come First

ADDITION AND RENOVATION FOR
BARNWELL ELEMENTARY SCHOOL
FULTON COUNTY SCHOOL DISTRICT
 JOHNS CREEK, GEORGIA

NOT TO SCALE

CD 03-06-09	PERMIT REVIEW
CD 06-24-09	PERMIT RE-SUBMITTAL
CD 07-20-09	BID SET
10-05-09	ADDENDA

PROJECT NO:
 • 2007-0178
 CAD FILE NAME:
 • 7178pf101.dgn

COPYRIGHT © 2008 by CDH PARTNERS INC.
 All rights reserved. These documents, as instruments of service, remain the property of the architect and no part may be used or reproduced without prior written permission of the copyright owner.

DRAWING NUMBER
PF101
 3 OF 9

10/8/2009 11:04:51 AM \\cdh-partners.com\projects\ES\2007-0178\Design\7178pf101.dgn